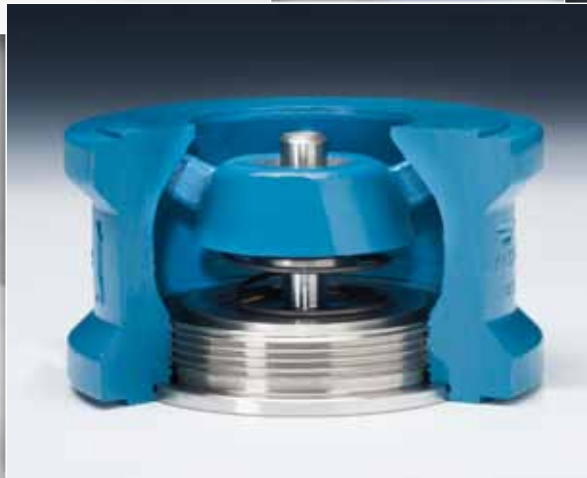


DFT®

DFT's family of In-Line Check Valves are available in a variety of designs:

- Basic-Check®
- Restrictor Check
- SCV®
- SCV-R®
- Vacuum Breaker
- DLC®
- Excalibur®
- GLC®
- GLC®-Cast Iron
- PDC®
- DSV®
- ALC®
- FBC®
- WLC®
- WLC®-Cast Iron
- Y-Calibur™



Non-Slam Check Valves



DFT® Model DSV® Sanitary Check Valve

- Spring-assisted silent closing
- Horizontal or vertical installation
- Sizes 1/2" thru 4"
- 150 CWP
- 316L body and seat
- 316 disc, spring and guide assembly
- 25 Ra Internal Surface Finish (Option: 15 Ra)
- Edge-guided disc: 1/2" thru 2"
- Edge/center-guided disc: 2 1/2", 3", 4"
- Lapped "metal" seat and disc
- Springs:
 - Low cracking pressures
 - .16 psig to .66 psig
 - Conical design
 - Electropolished finish
- CIP (Clean in Place)
- Clamped ends
- Seat leakage per MSS SP-61
- Meets 3A Standard 58-00



- Straight thru inline or offset inlet/outlet



DFT® Basic-Check® Valve

- 1/4" to 2 1/2" Line size
- 450 to 6000 CWP
- Threaded ends
- Stainless steel construction
- Spring-assisted silent closing
- Horizontal or vertical installation
- Tight shutoff - lapped disc & seat
- Easy maintenance
- Versatile



DFT® Vacuum Breakers

- 1" to 4" size (MNPT)
- 450 to 6000 CWP
- Threaded O.D. (MNPT)
- Unthreaded inlet bore
- Stainless steel construction
- Spring-assisted silent closing
- Horizontal or vertical installation
- Tight shutoff - lapped disc & seat
- Easy maintenance
- Versatile



DFT® Model SCV® Check Valve

- 1/2" to 3" Line size
- 750 & 3600 CWP
- FNPT & SW ends
- Stainless steel construction
- Inconel® X-750 spring
- Spring-assisted silent closing, non-slam
- Zelon® "O" ring body seal
- Horizontal or vertical installation
- Body-guided disc
- Tight shutoff lapped disc & seat
- Simplified 5-part construction
- Easy maintenance
- Versatile



DFT® Restrictor Check Valve

- Higher cracking pressures (2 to 40 psi)
- 1/4" to 2 1/2" Line size
- 450 to 2500 CWP
- Threaded ends
- Stainless steel construction
- Spring-assisted silent closing
- Horizontal or vertical installation
- Tight shutoff - lapped disc & seat
- Easy maintenance
- Versatile



DFT® Model SCV-R® Check Valve

- For higher cracking pressures
- 1/2" to 2" Line size
- 750 CWP
- FNPT & SW ends
- Stainless steel construction
- Inconel® X-750 spring
- Spring-assisted silent closing, non-slam
- Cracking Pressures: 0.8 to 40.8 psig
- Zelon® "O" ring body seal
- Horizontal or vertical installation
- Body guided disc
- Tight shutoff lapped disc & seat
- Easy maintenance
- Versatile



DFT® Model DLC® Check Valve

- ANSI B16.10 Face-to-Face dimensions
- Spring-assisted silent closing, non-slam
- 1/2" to 3" Line size
- ASME Class 150 and 300
- Stainless steel construction
- Optional body materials:
 - Alloy 20
 - Hastelloy®
- Raised face flanged ends
- Inconel® X-750 spring
- Electron beam welded body
- Meets ASME B16.34 - 2004
- Horizontal or vertical installation
- Body-guided disc
- Tight shutoff - lapped disc & seat
- Simplified construction - 3 parts
- Versatile



DFT® Model PDC® Check Valve

- Pulse-damped design
- Modulating "air" or "gas" applications:
 - Discharge of reciprocating air/gas compressors
 - Self sizing
- Meets API 6D
- ASME B16.10 Face-to-Face dimensions
- One-piece body
- Standard body materials:
 - Carbon steel
 - Stainless steel
- Spring-assisted silent closing
- 2" to 20" Line size*
- ASME Class 150 to 1500
- Center guided trim
- Horizontal or vertical installation
- Tight shutoff
- Protected spring
- Easy maintenance
- Versatile
- Axial flow
- Nozzle style



DFT® Excalibur® Silent Check Valve

- ASME B16.10 Face-to-Face dimensions
- Spring-assisted silent closing, non-slam
- 2" to 24" Line size*
- ASME Class 150 to 1500
- WCB & SS bodies
- Alloys available
- Stainless steel trim
- Center-guided
- Dual-guided stem
- Horizontal or vertical installation
- Tight shutoff
- Two-piece body
- Protected spring
- Easy maintenance
- Versatile
- Axial flow
- Nozzle style



DFT® Model WLC® Wafer Style Check Valve

- Wafer design
- Center-guided/Dual-guided stem
 - 1" to 10"
 - ASME 150-2500 (consult factory)
- Standard body materials:
 - A216 Grade WCB carbon steel
 - A351 CF8M stainless steel
- Optional body materials include:
 - Alloy 20 - Inconel® 625 - Titanium
 - Hastelloy® - Duplex SS
- Lightweight
- Spring-assisted silent closing
- Edge-guided (1" & 1-1/2"-ASME 600 to 2500)
- Horizontal or vertical installation
- Protected spring
- ASME Class 150 to 1500
- Axial flow
- Nozzle style



DFT® Model GLC® Silent Check Valve

- "Short" Face-to-Face dimensions
- API 6FD Fire Test
 - ASME 150 and 300, 2" to 42"
- One-piece body
- WCB & SS bodies
- Alloys available
- Spring-assisted silent closing, non-slam
- Center-guided, dual-guided stem
- Horizontal or vertical installation
- Protected spring
- Easy maintenance
- Versatile
- ASME Class 150 to 2500
 - 1" to 24" Line size*
 - 316 SS trim
 - RF Flanged ends
 - MSS-SP61 seat leakage
- Axial flow
- Nozzle style



DFT® Model ALC® Wafer Style Check Valve

- API 594 Face-to-Face dimensions
- RF Wafer ends
- Spring-assisted silent closing
- Sizes 2" thru 24"
- Standard body materials:
 - A216 Grade WCB carbon steel
 - A351 CF8M stainless steel
- Other alloys available, consult the factory
- Horizontal or vertical installation
- ASME Class 150 and 300
- Stainless steel seat, disc & bushing
- Nitronic® 60 stem
- Inconel® X-750 Spring
- 0.5 psi cracking pressure spring
- Seat Leakage per MSS SP-61
- Tapped holes in body for lifting lugs (10" size and larger)
- Axial flow
- Nozzle style



DFT® Nickel-Aluminum Bronze Valves

- **Excalibur®-NAB**
- **GLC® - NAB**

These silent check valves are spring-assisted, nozzle style, non-slam check valves that are designed to withstand the harsh environments of salt and brackish water applications where corrosion resistance and marine life deterrents are a must. DFT's center guided check valves provide reliable, low-maintenance service and solve the problems associated with water hammer and severe applications and environments. See DFT® Model Excalibur® Silent Check Valve & DFT® Model GLC® Silent Check Valve above for a complete lists of features.



* Consult DFT for larger sizes.

DFT® Model FBC® Compact Insert Check Valve

- Spring-assisted silent closing
- Horizontal or vertical installations
- Sizes 1" through 4"
- ASME/ANSI Class 150 and 300
- Stainless steel seat, disc, guard, retaining ring & spring
- Cracking pressure: 0.6 to 0.15 psi
- Temperatures to 450°F for standard valves
- Extended tag for easy identification of the installed valve
- Use in Schedule 40 pipe, consult factory for Schedule 80
- Meets ASME B16.34-2004 & MSS SP-126
- Flange finish per MSS SP-6
- Seat leakage per MSS SP-61



DFT® Y-Calibur™ Silent Check Valve

- ASME B16.10 Face-to-Face dimensions
- Spring-assisted silent closing, non-slam
- 4" to 14" Line size
- ASME Class 600 to 2500
- Standard body materials:
 - A216 WCB carbon steel
 - A351 CF8M stainless steel
- Optional body materials include:
 - Alloy 20
 - Inconel® 625
 - Monel®
 - Hastelloy®
 - Duplex SS
- Optional ends:
 - Flanged
 - RTJ
- Stainless steel trim
- Other materials available
- Center-guided
- Dual-guided stem & disc
- Horizontal or vertical installation
- Tight shutoff
- Protected spring
- Fully repairable in-line
- Versatile
- Axial flow/non-slam design



DFT® Model GLC®-Cast Iron Silent Check Valve

- "Short" Face-to-Face dimensions
- One-piece body
- Spring-assisted silent closing
- Center-guided
- Dual-guided stem
- Horizontal or vertical installation
- Easy maintenance
- Versatile
- ASME Class 125 & 300
 - 2 1/2" to 24" Line size (Cl.125)
 - 2 1/2" to 8" Line size (Cl.250)
 - Cast Iron Body
 - Bronze or 316 SS trim
- FF Flanged
 - AWWA seat leakage
- Axial flow
- Nozzle style



DFT Inc. specializes in preventing check valve problems and failures caused by water hammer and reverse flow. The in-line, spring-assisted check valves are designed to meet customer requirements for horizontal and vertical installations in liquids, gas or steam.

Consult the DFT factory for engineered sizing solutions for your check valve related issues.

DFT valves serve the broad process industries:

- | | | |
|--------------------|--------------------|--------------------|
| • Chemical | • Petrochemical | • Steel |
| • Food & Beverage | • Pharmaceutical | • Textile |
| • General Industry | • Power Generation | • Ultra-pure Water |
| • Mining | • Pulp and Paper | • Desalination |
| • Oil and Gas | | |

DFT® Model WLC®-Cast Iron Wafer Style Check Valve

- Wafer design
- Lightweight
- Spring-assisted silent closing
- Center-guided with dual-guided stem
- Horizontal or vertical installation
- Protected spring
- ASME Class 125 & 300
 - 2" to 10" line size
 - Cast iron body
 - Bronze or 316 SS trim
 - Ends: Wafer FF
 - AWWA seat leakage
- Axial flow
- Nozzle style



DFT®

for more information

FACTORY
DFT Inc.
140 Sheree Boulevard
P.O. Box 566
Exton, PA 19341-0566

610-363-8903
800-206-4013
FAX 610-524-9242
ONLINE
EMAIL dft@dft-valves.com
INTERNET www.dft-valves.com

REPRESENTED BY: